

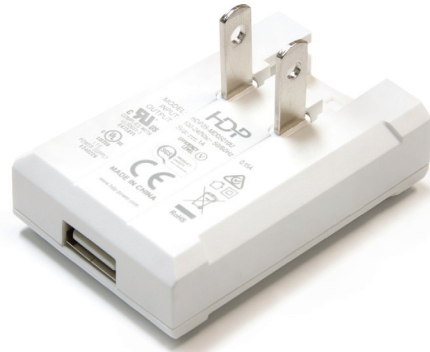
MEDITE

Global 5W Switch Mode Power Adapter for Medical & ITE Applications



Features

- Certified to IEC 62368-1 and IEC 60601 standards
- Interchangeable inputs for global markets
- Slim profile design with foldable US blades
- USB or fixed cord output
- Available in custom colors
- One year warranty



Electrical Specifications

INPUT VOLTAGE	90 ~ 264 VAC
FREQUENCY	47 ~ 63Hz
MAXIMUM OUTPUT POWER	5W
INRUSH CURRENT	Max 30A @ 230V Cold Start
EFFICIENCY	Meets CEC VI
LOW STANDBY POWER	Under 20mW

OVER VOLTAGE / SHORT CIRCUIT PROTECTION

Model	Output (V)	Output (A)	Ripple
HDP05-MD05010U	5.0V	1000mA Max	50mV
HDP05-MDXXXYYC	3.0V ~ 5.0V	1000mA Max	50mV
HDP05-MDXXXYYC	5.2V ~ 6.0V	960mA Max	60mV
HDP05-MDXXXYYC	6.2V ~ 7.5V	800mA Max	75mV
HDP05-MDXXXYYC	7.6V ~ 8.5V	650mA Max	85mV
HDP05-MDXXXYYC	8.6V ~ 10.0V	580mA Max	100mV
HDP05-MDXXXYYC	10.2V ~ 12.0V	490mA Max	120mV

Model: XXX = Voltage, YY = Current, C = Fixed Cord, U = USB
 Optional global input adapters for UK, AU, EU, KC



Environmental & Reliability

OPERATING TEMPERATURE	0°C ~ 50°C
STORAGE TEMPERATURE	-20°C ~ 85°C
HUMIDITY	5% ~ 95% Non-Condensing
LEAKAGE CURRENT	0.15mA @ 264V & 63Hz
HI-POT	3000VAC 60 Sec
MTBF	100k Minimum Hours at 25°C

Safety, Efficiency, & EMC Standards

IEC 62368-1
 IEC 60601-1
 UL/cUL
 CE
 CB
 SAA

C-Tick
 FCC
 RoHS
 REACH
 CEC VI

